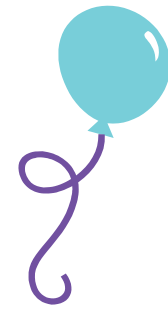


# Big Brothers Big Sisters

## in the Heart of Michigan

*(Serving Midland and Isabella Counties)*



***Presents...***

# **KIDS' DAY 2010 at the Midland Mall**

## **Saturday, January 23rd, 10:00a.m. - 5:30p.m.**

*A community event with entertainment and hands-on activities for children of all ages!*

### **Performance Schedule:**

- 10:30 am White Pines Celtic Arts Council – White Pine Pipes & Drums & Highland Dancers
- 11:00 am Lim's Tae Kwon Do Academy – Tae Kwon Do Demonstration
- 11:30 am Midland Center for the Arts Theater Performance
- Noon Shekinah Fire International Creative Arts - Children's Dance
- 12:30 pm Angel's Karate – Martial Arts Demonstration
- 1:00 pm Midland Gymnastics Training Center - Gymnastics Demonstration
- 1:30 pm Standing Ovation Dance Studio - Dance Performance
- 2:00 pm Chris McDonald, MHS - Singer/Songwriter and a Theater Improv Performance for kids with audience participation
- 2:30 pm Miss Auburn, Midland - Talent Exhibition
- 3:00 pm Kiddie Pedal Tractor Pull. Come see costumed characters compete on kiddie tractors "pulling for kids".  
Immediately following this event, all boys and girls (ages 3 -10) are invited to participate.  
The Kiddie Pedal Tractor Pull is sponsored by Farm Bureau Insurance Agents: Kim Walden, Kevin Laethem and Joe Caudy

### **Extras:**

**Free child id program sponsored by  
Centre Masonic Lodge #273, petting zoo,  
face painting, crafts, bounce house,  
tennis cage, free samples,  
Lou E. Loon and much more...**

### **Participating Organizations:**

4-H, The Fuse FM, American Chemical Society, Angel's Karate, Avon, Big Brothers Big Sisters, Blessed Sacrament School, Bullock Creek Schools, Campfire USA, Cancer Services, Chippewa Nature Center, Chippewa Preschool, Cold Stone Creamery, Creative 360, Family & Children's Services, Flying Pig Theatre Academy, Girl Scouts Heart of Michigan, Heart of Michigan Animal Rescue, Kids' Creek Preschool, Kid's 1<sup>st</sup> Child Development Center, Kinder Kare, Lim's Tae Kwon Do Academy, Michele's Montessori School, Michigan Community Blood Center, Midland Area Partnership for a Drug Free Youth, Midland Center for the Arts, Midland Christian School, Midland Community Center, Midland Community Tennis Center, Midland County Dept. of Public Health, Midland County Parent Coalition, Midland Gymnastics Training Center, Midland Montessori School, Midland Police Dept., Midland Public Schools, Midland Soccer Club, Midland Volunteers For Recycling, Mid-Michigan Children's Museum, MidMichigan Community Action Agency/Early Head Start, MidMichigan Heart Savers, Milestones Youth Center, Miss Auburn -Midland, Montessori Children's House, North Midland Family Center, PPCP (Presbyterian Parent Co-op Preschool), Rodnick Chiropractic, , St. Brigid Catholic School, St. John's Episcopal Preschool, St. John's Lutheran School, Success By Six./Early On/Midland Co. Quality Preschool Partnership, Shelterhouse, The Rock Youth Center, Trinity Lutheran Preschool, UNICEF, United Way of Midland Volunteer Center, Yats' Tae Kwon Do